

Autism Spectrum Disorders

Autism is considered a lifelong developmental disability that usually appears during the first three years of life. Resulting from a neurological disorder in the brain, autism interferes with normal development in reasoning, social interaction, and communication skills.

Autism affects people in many different ways. Speech and language can be absent or delayed. The autistic person might have impaired social skills. He or she may exhibit abnormal responses to sensations. He or she may perceive the environment in abnormal ways, which cause difficulties in relating to people, objects, and events.

Autism is not just one disorder with a well-defined set of symptoms. It is a broad spectrum of disorders that ranges from mild to severe. No two autistic individuals show the exact same symptoms.



The Northeast Regional Center for Autism Spectrum Disorders at Friendship House

The Northeast Regional Autism Center at Friendship House offers a broad range of center-based and in-home programs for children ages 18 months to 20 years, as well as offering services for parents and educators in the home, center and school setting. Services are individualized for each child, and based on current research and recommendations of the Pennsylvania Autism Task Force.

Goals & Objectives

Helping children with autism to ...

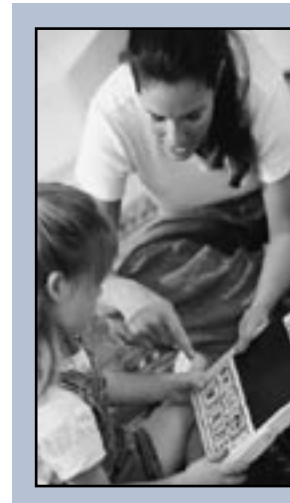
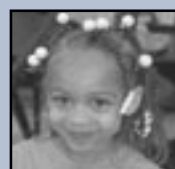
- Understand language
- Express their wants and needs
- Interact with adults and peers
- Work independently and learn in groups

To maximize potential for a full and satisfying life.

Communication difficulty is recognized as the leading reason behind difficult behaviors exhibited by children on the spectrum.

Treatment objectives are targeted to:

- Communication
- Imitation
- Social Interaction
- Play
- Self-help
- Academic Readiness



The Center's programs teach communication and learning readiness skills by immersing children in a language-rich environment, emphasizing social interaction, play and sensory stimulation.

Beginning the Treatment Process

Before services begin, a child may be assessed during a two to three hour "workshop" where the professional uses a variety of tools to determine the child's strengths and weaknesses, with input from the parents as well. A unique treatment plan is developed for that child, including the amount of therapy hours needed to make a positive impact on his or her life.

Principles of the Therapeutic Approach

The Friendship House program is based primarily on the principles of Applied Behavioral Analysis which research has shown to be the most effective treatment for this neuro-behavioral disorder. Other therapies will also be incorporated in a very collaborative effort with families and health professionals.

Why a full-day program for such young children ?

A large body of research reveals that 30 hours of Applied Behavioral Analysis can improve intelligence and adaptive behavior skills. Highly qualified staff and a full compliment of therapeutic equipment is readily available to each child. Children receive therapy in a classroom designed with sensitivity to the learning styles and preferences of each individual. Each day children also enjoy a recreation period on the outdoor playground or the indoor play area for gross motor development.

Lunch and snacks are provided under the supervision of a nutritionist. Children are also welcomed to bring foods they prefer. Nurses are available to administer medications if needed

Autism services at Friendship House offer the necessary components of treatment needed by those diagnosed on the spectrum which typical Behavioral Health Rehabilitative Service (BHRS) are unable to provide.

Emphasis is placed on interagency collaboration and school participation. Individualized treatment is designed by the entire team and delivered, as deemed, necessary, in all areas of each child's life.

A Competent & Caring Staff Familiar with Autism Family Dynamics

Friendship House uses a team approach. The autism core team consists of a licensed psychologist, behavioral specialists, clinical specialists, curriculum specialists and direct service professionals who work with children, and their parents, in the center, home, school and community-setting.

How to Get Started

For more information about
Friendship House
Autism Services call
570-342-8305-Ext. 1411

The Mission of Friendship House

The mission of Friendship House is to provide a continuum of quality programs and services to enhance the emotional, behavioral and social well-being of children and families in the communities we serve. Adapting to society's ever-changing needs will enable Friendship House to sustain this mission as it has since its founding in 1871.

Northeast Regional Autism Center

Scranton
1509 Maple Street, P.O. Box 3778,
Scranton, PA 18505
570-342-8305, Ext. 1411

Milford
221 Broad Street
Milford, PA 18337
570-296-3992

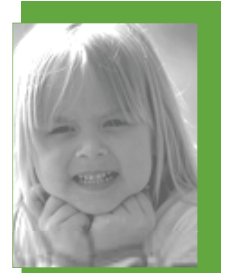
www.FriendshipHousePA.org

The Northeast Regional Autism Center at Friendship House offers a broad range of programs for children ages 18 months to 20 years, as well as offering services for parents and educators in the home, center and school setting.

Services are holistic, individualized for each child, and based upon current research and the recommendations of the Pennsylvania Autism Task Force.

The Autism Center for pre-school children provides state of the art, comprehensive therapy, 20 to 35 hours per week, with a staff to child ratio of one to one. The primary modality is Applied Behavior Analysis which is individualized by well-trained curriculum and clinical specialists. For school age children, consultative services, training and one-on-one staff are available in the classroom, community and social settings. All services include home and community hours to improve adaptive behavior skills in all settings.

The Autism Center is the newest specialty in a continuum of Friendship House services for toddlers to teens with emotional difficulties, from outpatient counseling to residential care, throughout Eastern Pennsylvania.



Northeast Regional Autism Center
at Friendship House



*Dedicated to enriching
lives of children
and their families on
the autism spectrum*

Northeast Regional Autism Center
Scranton ■ Milford

www.FriendshipHousePA.org