

Children's Advocacy Center (CAC) of Northeast Pennsylvania is a private non-profit, charitable organization whose mission is to provide excellence in the assessment and treatment of child abuse and neglect. CAC provides medical assessments and child forensic interviews for victims of abuse and neglect and coordinates a multidisciplinary team response to child abuse and neglect in Lackawanna and surrounding counties of Northeastern Pennsylvania. The Center also provides child abuse prevention education to professionals and communities served. CAC/NEPA is an accredited member of the National Children's Alliance.



Mary Ann LaPorta, Director
www.nepacac.org

Friendship House, a not-for-profit organization headquartered in Scranton, is one of Northeastern Pennsylvania's oldest and largest providers of children's behavioral healthcare. The mission of Friendship House is to provide a continuum of quality programs and services designed to enhance the emotional, behavioral and social well-being of children and families in the communities we serve. Adapting to society's ever-changing needs enables Friendship House to sustain this mission as it has since its founding in 1871. Friendship House offers a full continuum of mental health services for children, from infancy to adolescents who face emotional challenges and behavioral problems.



Robert H. Angeloni, President
www.FriendshipHousePA.org

Trauma-Crisis Assessment Referral Service

Trauma Reverberates

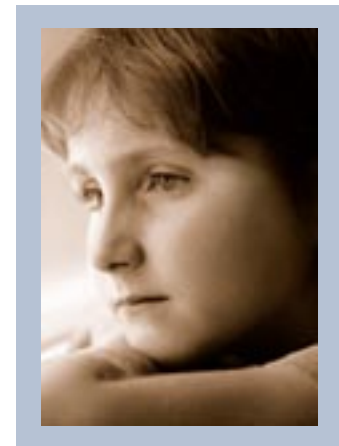
In this collaborative effort, Friendship House provides trained therapists to respond to emergency child abuse calls from the Children's Advocacy Center/NEPA and to participate at the Center in the forensic assessment process when a child victim of suspected abuse has been referred to the Children's Advocacy Center for services.

Members of the forensic team include the District Attorney's Office, the CAC medical team, CAC forensic interview team, law enforcement, Child Protective Services Unit of the County Children & Youth Office (CPS), and child victim advocate.

Necessary Elements of Healing

Immediate effective intervention is critical to the child's emotional stability following traumatic abuse. The Trauma Crisis Assessment Referral Service provides a collaborative coordinated effort to minimize the short and long term effects of child abuse and to ensure each child victim begins the journey of healing so necessary for recovery.

Friendship House staff will begin this healing process by integrating the trauma sensitive interventions with cognitive behavioral strategies through Trauma Focus Cognitive Behavioral Therapy (TF-CBT) recognized as a model program by the U.S. Department of Health & Human Services.



Therapists Role & Responsibilities

- Provide on-call availability on a rotating 24-hour, seven-day basis
- Observe the forensic evaluation process
- Assist or intervene should the child become emotionally upset or unresponsive during the course of the evaluation
- Establish an initial supportive and empathic therapeutic relationship with the child
- Encourage the child and parent or guardian to participate in a follow-up mental health evaluation and therapeutic intervention
- Refer for on-going therapy and counseling sessions based on assessment of the child during crisis intervention treatment
- Ensure that the child can attend the initial appointment
- Recommend other community support services as needed, to provide a holistic approach to healing

Child Abuse Statistics

The United States

1 in 3 girls and 1 in 7 boys are molested before the age of 18*.

67% of all victims of sexual assault are minors*

Pennsylvania

4,152 substantiated cases of abuse were reported in Pennsylvania in 2006. **

1.4 out of every 1,000 children in Pennsylvania are abused. **

Lackawanna County

66 substantiated cases of abuse were reported in Lackawanna County in 2006. **

1.5 out of every 1,000 children in Lackawanna County are abused.**

Effects of Trauma from Child Abuse

80% of abused children develop at least one health problem.

60% of abused children suffer from delays in development.

75-85% of abused children develop mental health issues, including depression, and addictions.

* U.S. Department of Justice

** PA Department of Public Welfare



Connections: Trauma Crisis Assessment Referral Service



**Friendship
House**



***A collaborative effort
to begin
the journey of healing
for a child victim of abuse
and neglect***

In partnership with



**The Blue Ribbon Foundation
of BlueCross of Northeastern Pennsylvania**

Independent Licensee of the Blue Cross and Blue Shield Association
®Registered Mark of the Blue Cross and Blue Shield Association

**THE ROBERT Y. MOFFAT FAMILY
CHARITABLE TRUST**

**Scranton Area
Foundation**
Catalyst for Community